



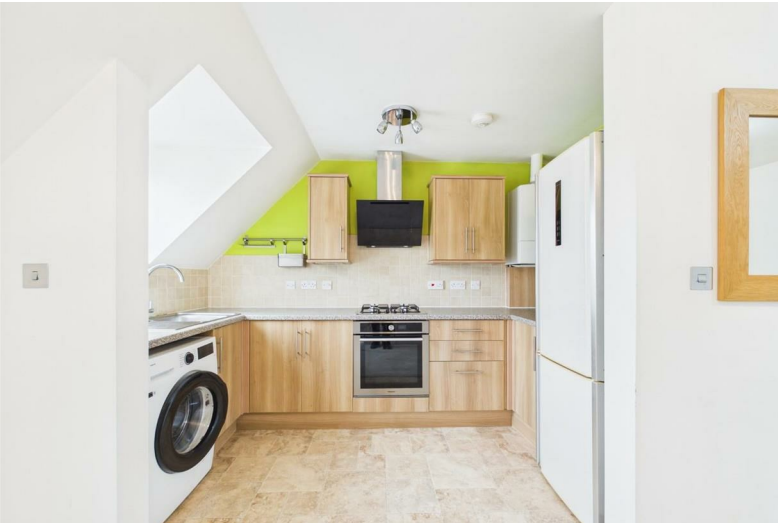
Flat 8, 39 Cooperage Road

Redfield, Bristol, BS5 9RE

Asking price £280,000



Flat 8, 39 Cooperage Road



Description

A purpose-built top floor flat boasting generous proportions and is perfect for those seeking a modern and comfortable living space.

The flat features three well-appointed bedrooms, including a master bedroom with an en-suite shower room. The open-plan living area is designed for both entertaining and everyday living. Additionally, there is a main bathroom. Whilst outside provides an allocated parking space.

Situated on the edge of Netham Park, this property offers the perfect blend of tranquillity and convenience. You will find yourself just a short stroll away from Church Road, which is lined with an array of cafes, bars, and delicatessens, making it an ideal spot for socialising and enjoying the local culture.

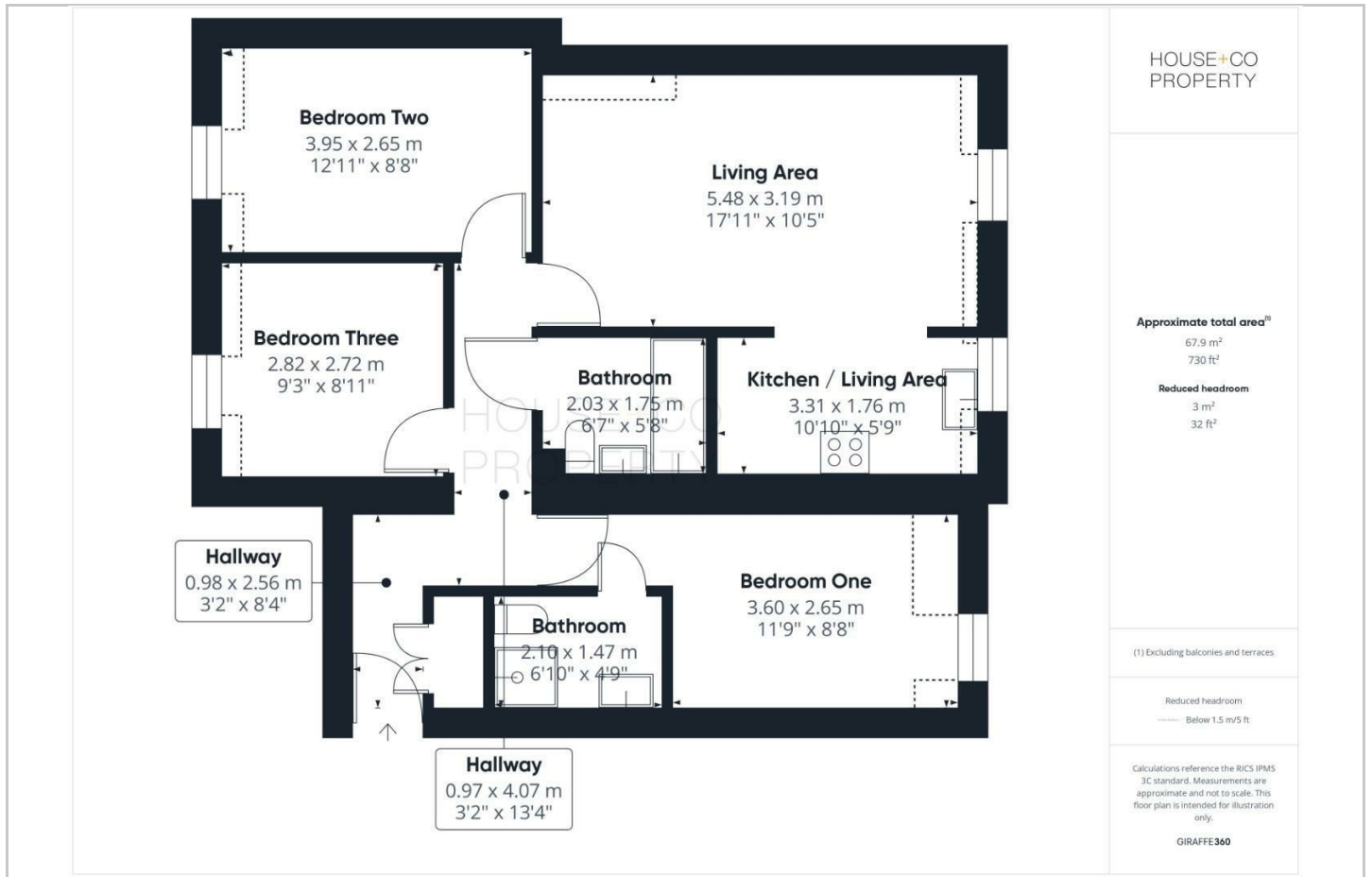
This flat is not only a wonderful home but also a fantastic opportunity to experience

- TOP FLOOR APARTMENT
- MASTER EN-SUITE
- MODERN KITCHEN
- ALLOCATED PARKING
- THREE BEDROOMS
- GREAT SIZE LIVING ROOM
- FAMILY BATHROOM
- NO ONWARD CHAIN WORRIES

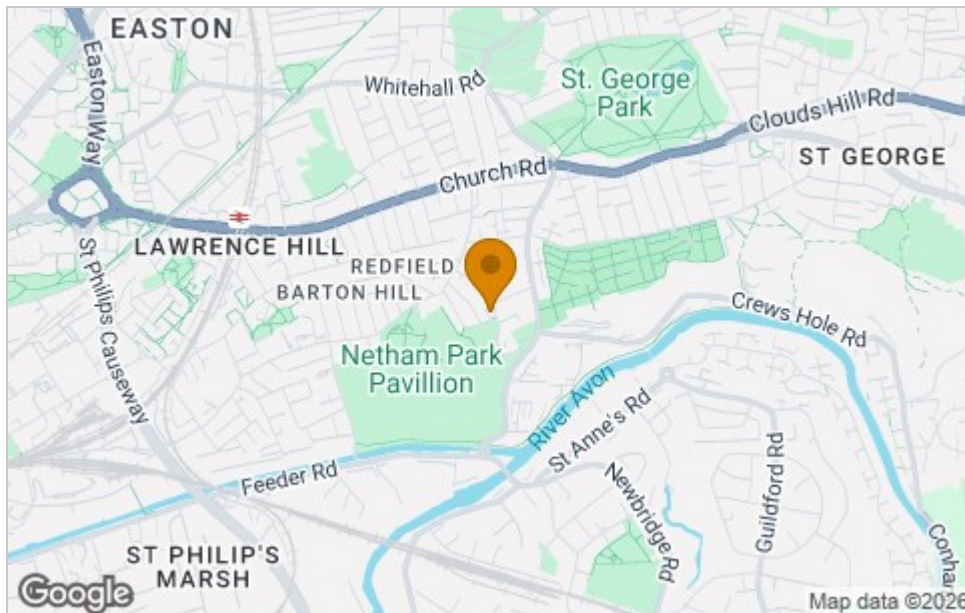




Floor Plan



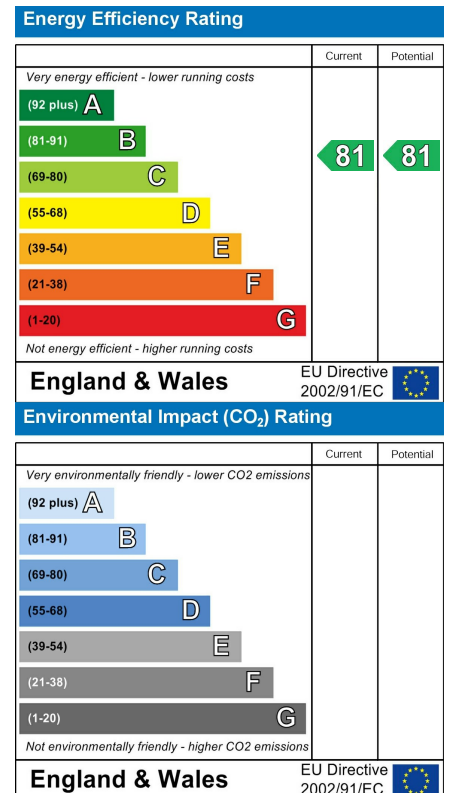
Area Map



Viewing

Please contact our House + Co Property (Sales) Office on 0117 907 0020 if you wish to arrange a viewing appointment for this property or require further information.

Energy Efficiency Graph



These particulars, whilst believed to be accurate are set out as a general outline only for guidance and do not constitute any part of an offer or contract. Intending purchasers should not rely on them as statements of representation of fact, but must satisfy themselves by inspection or otherwise as to their accuracy. No person in this firm's employment has the authority to make or give any representation or warranty in respect of the property.